

Product Information

Sensors and Instrumentation

Flow Indicator PO



- Simple flow display
- Rotatable connections
- Removable connections thanks to clip-fitting
- Different connection possible on each side

Characteristics

Mechanical flow indicator, for fluid media, with rotor for quantitative flow display. The rotor turns in proportion to the flow.

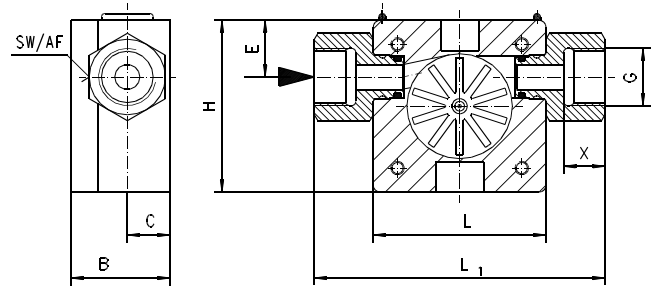
Technical data

Nominal width	DN 10, DN 25	
Process connection	female thread G 3/8, G 1	
Display range	0.1..100 l/min	for details see table "Ranges and weights"
Q_{max.}	to 100 l/min	
Pressure resistance	PN 16 bar	
Medium temperature	0..60 °C	
Ambient temperature	0..60 °C	
Materials medium-contact	PPS, PSU Ultrason, PVDF, ceramic ZrO ₂ -TZP, Iglidur X, FKM	
Medium	water (oils have a tendency to a higher running-up value)	
Weight	see table "Ranges and weights"	
Installation location	as desired, except for inwards flow from above	

Ranges and weights

G	Types	PN bar	Range l/min H ₂ O	Weight kg
G 3/8	PO-010GVA020	16	0.1 - 1.5	0.1
	PO-010GVA050		0.2 - 10.0	
	PO-010GVA070		0.4 - 12.0	
G 1	PO-025GVA080	16	2.0 - 30.0	0.4
	PO-025GVA120		3.0 - 60.0	
	PO-025GVA160		4.0 - 100.0	

Dimensions



G	H	L	L1	B	C	E	SW	X
G 3/8	50	50	84	29	12.5	16.5	22	12
G 1	70	70	110	53	23.0	27.5	38	18

Handling and operation

Installation

Installation location as desired (please ensure best possible venting).
 Because of the rotatable connections, no further adapter is required.

Ordering code

1. 2. 3. 4. 5.
 PO- G A

○=Option

1. Nominal width		
010	DN 10 – G 3/8	
025	DN 25 – G 1	
2. Mechanical connection		
G	female thread	
3. Connection material		
V	PVDF	
M	○ CW614N	
K	○ stainless steel	
4. Housing material		
A	PPS with transparent polysulfone cover	
5. Inwards flow drilling		
020	Ø 2	•
050	Ø 5	•
070	Ø 7	•
080	Ø 8	•
120	Ø 12	•
160	Ø 16	•